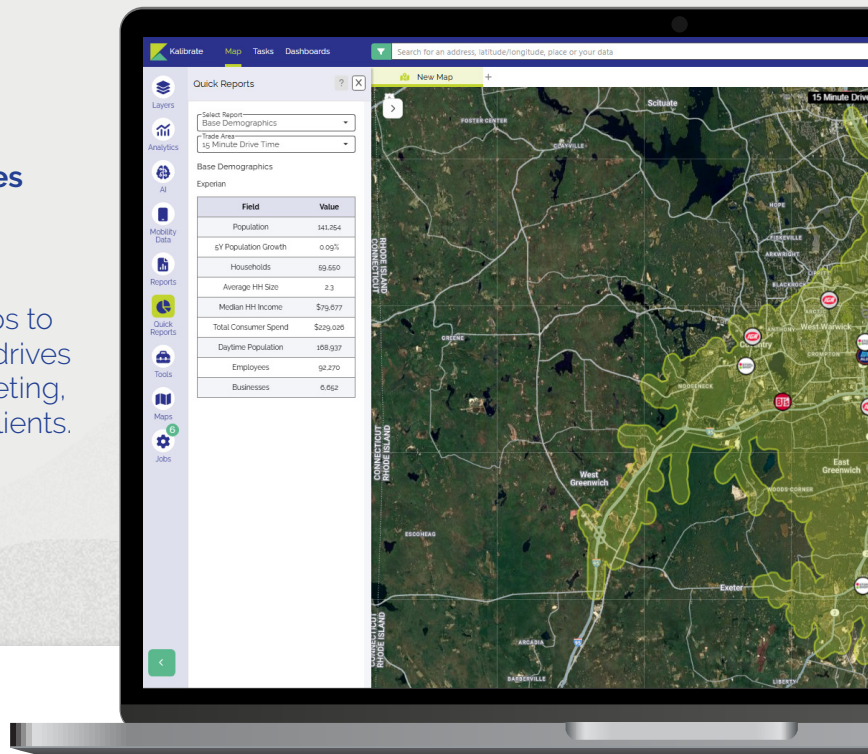


Centralize location data. Market sites. **Close deals.**

The all-in-one platform for marketing properties and delivering expert market knowledge... everything you need in one place.

Get comprehensive location data at your fingertips to streamline deals. Kalibrate Location Intelligence drives successful transactions, simplifies property marketing, and positions you as the market expert for your clients.

Kalibrate Location Intelligence is built for real estate professionals.



Create professional reports and custom maps

- Upload your properties and prospects
- Access demographics, point-of-interest (POI) data, ChainXY, CenterXY, and traffic counts in one system
- Analyze competition, identify ideal tenant mixes
- Generate custom maps for tour books and marketing

Close more deals in less time

- Create client reports in minutes, not hours
- Give landlords and tenants data-backed recommendations
- Stop toggling between multiple applications

Trade area insights that drive transactions

Kalibrate Location Intelligence with our mobile analytics solution, Competitive Insights, provides all the data and analysis you need.

With this solution, you'll have access to:

- Up to five user licenses
- Demographics, customer segmentation, mobile data, traffic counts, POI, and more
- Market trends and forecasting
- Competitive Insights for foot traffic data, cross shop analysis, and market share by brand or location



Kalibrate Location Intelligence on the go — your complete real estate platform, anywhere you are.

Answer client questions on-site with real-time analytics and insights. Turn site tours into closings with complete mobile functionality to answer any of your clients' questions or address concerns instantly.

Flexible to your needs with additional data sources.

- **Regrid:** Comprehensive parcel data
- **Hubexo (formerly Build Central):** Construction projects and permits
- **Restaurant Trends:** Food service market metrics
- **Premium TrafficMetrix®:** Detailed traffic counts and patterns — updated quarterly



SIMON

BRIXMOR



KITE
REALTY GROUP

PHILLIPS EDISON & COMPANY

The platform of choice for CRE firms of every size.

3

KIMCO
REALTY

Kleban
PROPERTIES

CRE360
PARTNERS

STNL
ADVISORS

About Kalibrate

We exist to create a world without guesswork. For decades, we've combined the power of data science, human ingenuity, and machine learning to help organizations of all sizes make location-critical business decisions with confidence, so you can understand risk, identify opportunities, and outperform the competition.

www.kalibrate.com